

- One module for all fields of application
- Excellent Illumination
- Easy installation
- High IP protection type

The ComEx illuminated button signals command modes by means of a light signal. It is suitable for use in almost all potentially explosive areas in which the functional status of machinery needs to be visibly displayed. The illuminated buttons are executed according to the requirements of type of protection “e increased safety” and “d flameproof enclosure”. The illuminated button can be combined with various lamp module actuators. Each illuminated button actuator is inserted in a mounting hole on a control console or control panel. The respective illuminated button is designed for installation onto a mounting rail. The conductor is connected using terminals with increased safety on the back of the module. The simple installation of the illuminated button actuators, without the use of tools, guarantees the high IP protection type.

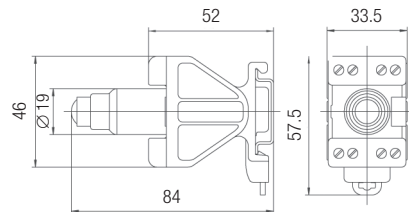
Explosion protection

Marking ATEX	II 2G Ex db eb IIC Gb I M2 Ex db eb I Mb
Certification	CML 17 ATEX 1106 U
Marking IECEx	Ex db eb IIC Gb Ex db eb I Mb
Certification	IECEx CML 17.0046U
Other approvals and certificates, see www.bartec.de	
Ambient temperature	-55 °C to +50 °C +60 °C (AC/DC 12 to 24 V)

Technical data

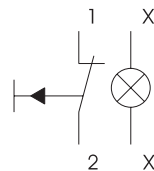
Protection class	determined by the actuating element and ComEx enclosure, min. IP 66, terminals IP 20	
Rated insulation voltage	300 V	
Rated operating voltage	AC 12 V to 250 V	($T_a \leq +50 \text{ °C}$)
	DC 12 V to 60 V	($T_a \leq +50 \text{ °C}$)
	AC/DC 12 V to 24 V	($T_a \leq +60 \text{ °C}$)
Power consumption	$\leq 1 \text{ W}$	
Lamp	LED: red, green, yellow, white, blue	
Illumination	very bright, visible angle over 180°	
Contacts	1 NC or 1 NO as snap switch element	
Switching capacity	AC-15	1 A/230 V
	DC-13	0.25 A/24 V
Enclosure material	thermoplastic	
Type of connection	terminals 2.5 mm ² , fine stranded	
Service life	$>10^5$ running hours	
Mechanical life	$>10^5$ switching cycles	
Storage and transport temperature	-55 °C to +70 °C	
Weight	approx. 110 g	
Fastening	onto mounting rail TS 35 x 7.5	
Shock resistance	DIN EN/IEC 60068-2-27, 30 g, 18 ms	

Dimensions



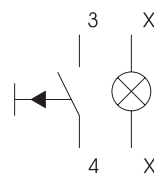
Ordering information

Type of contact	Code no.	Colour LED	Code no.	Colour actuator	Code no.
1 NC	7	red	1	red	5



green	2	green	6
yellow	3	yellow	7

1 NO	8
------	---



white	4	white	8
blue	5	blue	9

Complete order no.

Illuminated button without actuating element	07-3361-1	<input type="checkbox"/>	<input type="checkbox"/>	0
Actuating element Standard	05-0003-006	<input type="checkbox"/>	<input type="checkbox"/>	00
Increased oil resistance	05-0003-006	<input type="checkbox"/>	<input type="checkbox"/>	00BN

Please enter code number.

Technical data subject to change without notice.